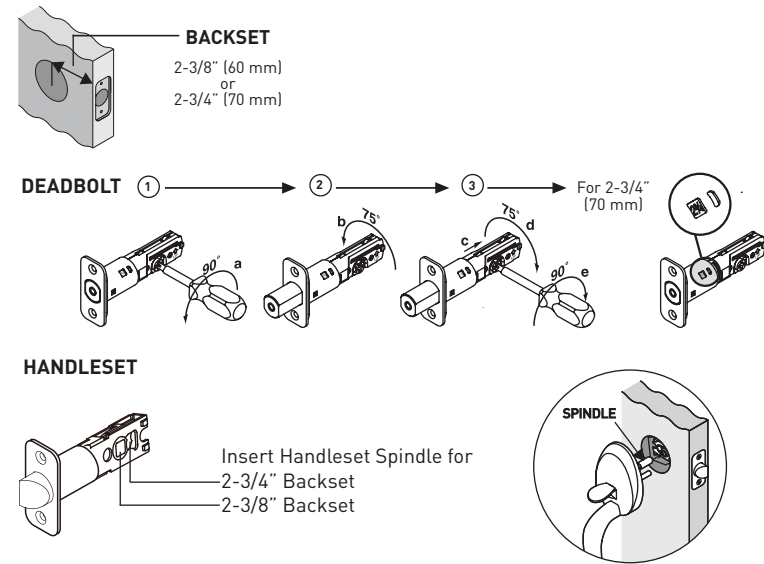


IMPORTANT! TEMPLATE MUST PRINT AT 1/1 SCALE

Sheet size: 11" x 17"

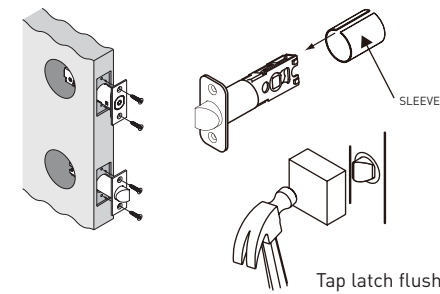
280mm x 432mm

4 IF NECESSARY ADJUST LATCH INSTALLATIONS FOR PROPER BACKSET

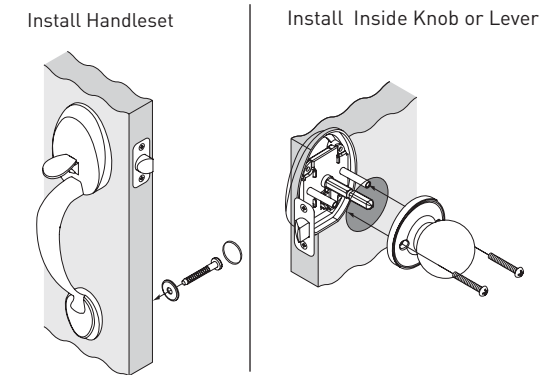


5 INSTALL HANDLESET LATCH AND DEADBOLT

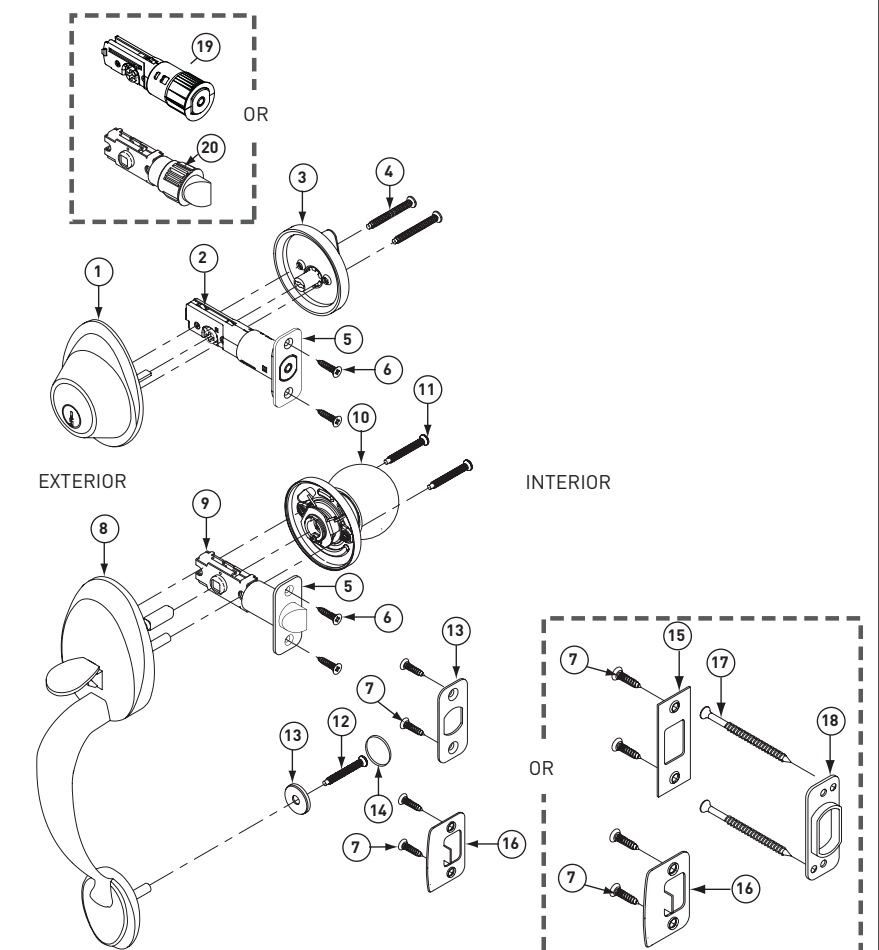
- Place sleeve over handleset latch before installation in square corner or radius corner mortise configuration
- Do not use sleeve for installations in drive-in configuration



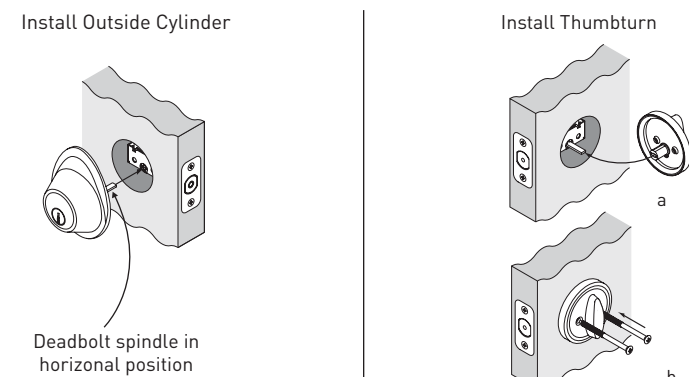
6 INSTALL HANDLESET, INSIDE LEVER OR KNOB



- | | |
|---------------------------------------|---|
| 1. Outside Cylinder | 11. 1-1/2" (38 mm) Dome Head Knob Screws (2) |
| 2. Deadbolt Latch | 12. 1-1/4" (32 mm) Handleset Post Screw (1) |
| 3. Thumbturn | 13. Washer |
| 4. 2-5/8" (66 mm) Deadbolt Screws (2) | 14. Screw Cap |
| 5. Rounded Corner Faceplate | 15. Deadbolt Strike |
| 6. 3/4" (19 mm) Latch Screws (4) | 16. Latch Strike |
| 7. 1-1/4" (32 mm) Strike Screws (4) | 17. 3" (76 mm) Reinforcement Screws (2) |
| 8. Handleset | 18. Reinforcement Strike Plate |
| 9. Handleset Latch | 19. 2-Piece Drive-In Collar for Deadbolt Latch |
| 10. Inside Knob or Lever | 20. 2-Piece Drive-In Collar for Handleset Latch |



7 (FOR SINGLE CYLINDER FUNCTION) INSTALL OUTSIDE CYLINDER HOUSING AND INTERIOR THUMBTURN



8 INSTALL STRIKES

