



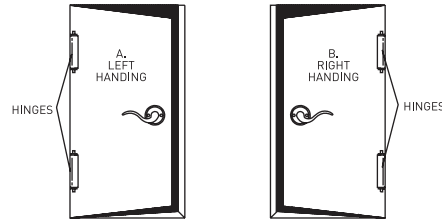
INSTALLATION INSTRUCTIONS
FJORD

TOOLS AND MATERIALS REQUIRED

- > Drill
- > 2-1/8" [54 mm] Hole Saw
- > 3/8" [10 mm] Drill Bit
- > 1" [25 mm] Wood Bit
- > Chisel
- > Phillips Screw Driver
- > Tape Measure

1 DETERMINE DOOR HANDING

Stand at the exterior side and face the door.
A. Your door is a LEFT HAND door if hinges are installed at your left hand.
B. Your door is a RIGHT HAND door if hinges are installed at your right hand.



2a USE THROUGH-BOLT TEMPLATE TO MARK AND DRILL HOLES

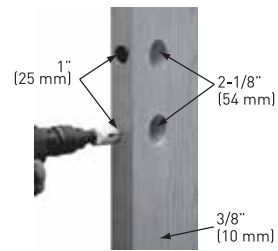
1. MARK DOOR

Use template attached to mark holes on door face.
A. Make mark for 1" [25 mm] hole on door edge.
B. Height 36" [914 mm] to 38" [965 mm] from floor.

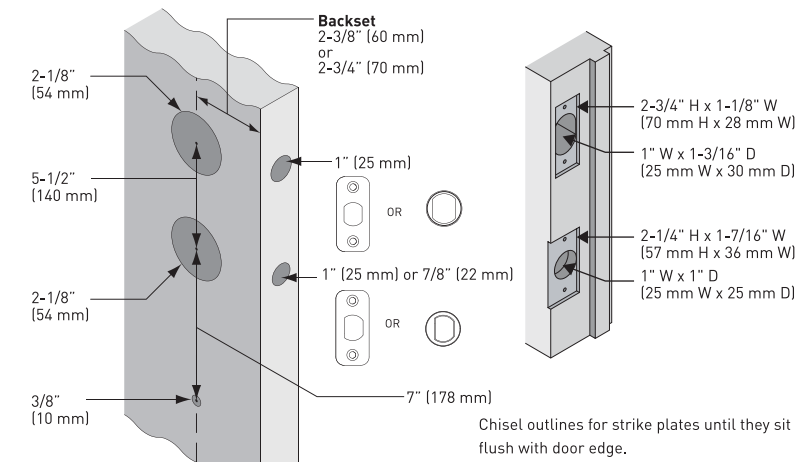


2. DRILL HOLES

Select backset. Mark and drill holes as shown.

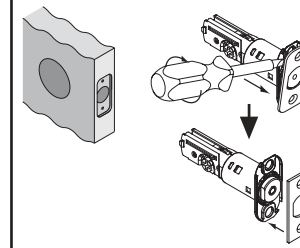


2b IF REPLACING EXISTING HANDLESET OR INSTALLING ON PRE-DRILLED DOOR, CHECK DOOR JAMB AND DOOR PREPARATION



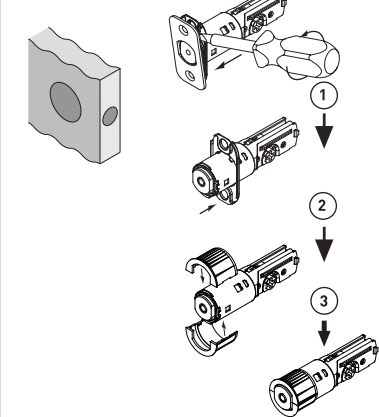
3 CHOOSE LATCH FACE PLATE FOR HANDLESET & DEADBOLT

RADIUS OR SQUARE CORNER MORTISE

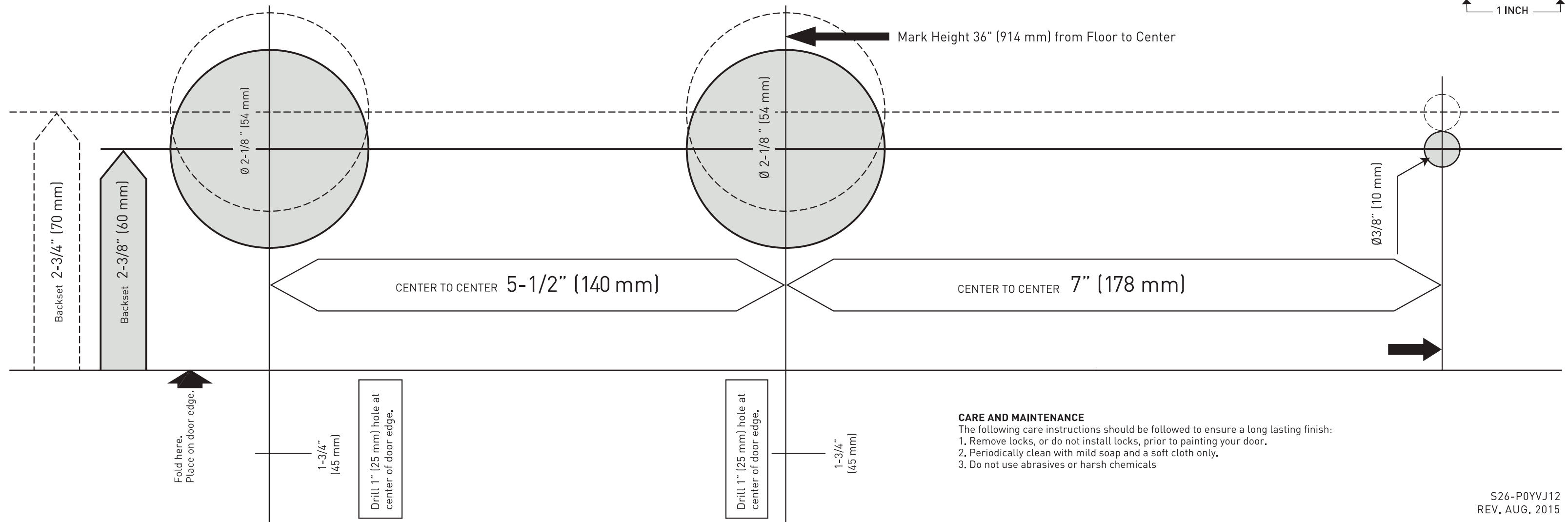
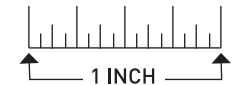


Chisel 1/8" [3 mm] deep or until latch face plate is flush with door edge.

DRIVE-IN



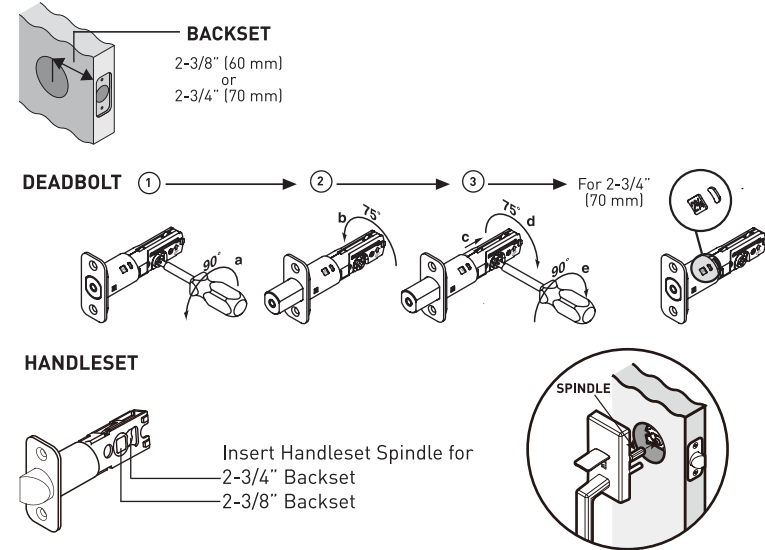
IMPORTANT: Print template to scale if not factory supplied instructions.



CARE AND MAINTENANCE

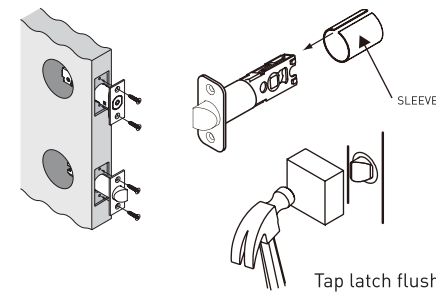
- The following care instructions should be followed to ensure a long lasting finish:
1. Remove locks, or do not install locks, prior to painting your door.
 2. Periodically clean with mild soap and a soft cloth only.
 3. Do not use abrasives or harsh chemicals

4 IF NECESSARY ADJUST LATCH INSTALLATIONS FOR PROPER BACKSET

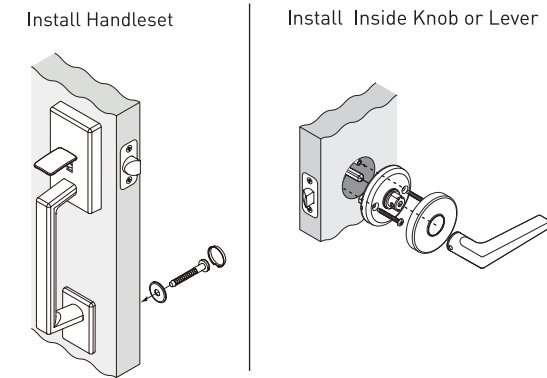


5 INSTALL HANDLESET LATCH AND DEADBOLT

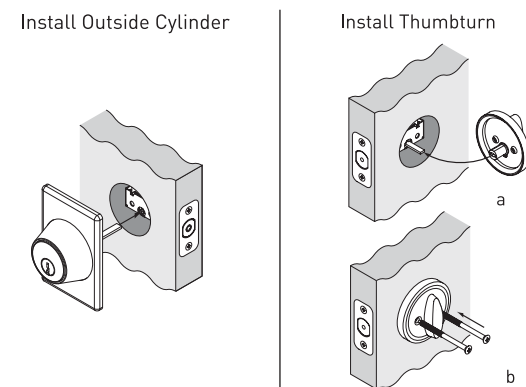
- Place sleeve over handleset latch before installation in square corner or radius corner mortise configuration
- Do not use sleeve for installations in drive-in configuration



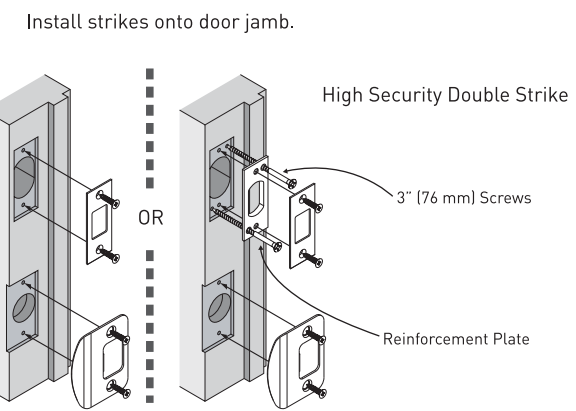
6 INSTALL HANDLESET, INSIDE LEVER OR KNOB



7 (FOR SINGLE CYLINDER FUNCTION) INSTALL OUTSIDE CYLINDER HOUSING AND INTERIOR THUMBTURN



8 INSTALL STRIKES



- | | |
|--|---|
| 1. Outside Cylinder | 12. Interior Rose |
| 2. Deadbolt Latch | 13. Inside Lever |
| 3. Thumbturn | 14. Washer |
| 4. 2-5/8" [66 mm] Deadbolt Screws [2] | 15. 1-1/4" [32 mm] Handleset Post Screw [1] |
| 5. Rounded Corner Faceplate | 16. Screw Cap |
| 6. 3/4" [19 mm] Latch Screws [4] | 17. Deadbolt Strike |
| 7. 1-1/4" [32 mm] Strike Screws [4] | 18. Latch Strike |
| 8. Handleset | 19. 3" [76 mm] Reinforcement Screws [2] |
| 9. Handleset Latch | 20. Reinforcement Strike Plate |
| 10. Interior Rose Plate | 21. Set Screw |
| 11. 1-1/2" [38 mm] Mounting Screws [2] | 22. Wrench |
| | 23. 2-Piece Drive-In Collar for Deadbolt Latch |
| | 24. 2-Piece Drive-In Collar for Handleset Latch |

