

Taymor® | PRODUCT SPECIFICATIONS

ASTRAL

FEATURES

- › INCLUDES MOUNTING PLATES* 1-3/16" x 1-3/16" (30 mm x 30 mm) - STEEL
- *PAPER HOLDER 1-15/32" x 1-13/32" (37 mm x 36 mm) - ZINC
- NYLON ANCHORS AND STEEL PHILLIPS HEAD SCREWS: #8 x 1-1/4" (32 mm)
- › SOLID ZINC DIE-CAST CONSTRUCTION (POSTS)



PIVOTING PAPER HOLDER



PAPER HOLDER



TOWEL BAR



PAPER/TOWEL HOLDER



DOUBLE TOWEL BAR



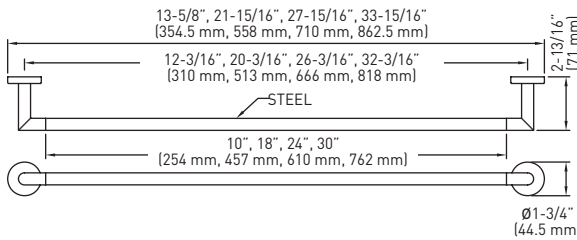
TOWEL RING



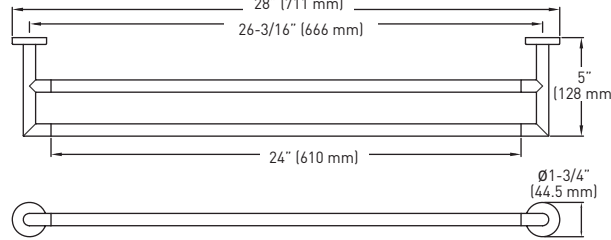
SINGLE ROBE HOOK



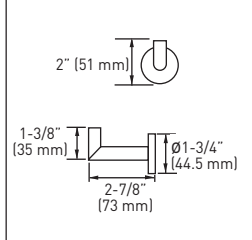
TOWEL BAR



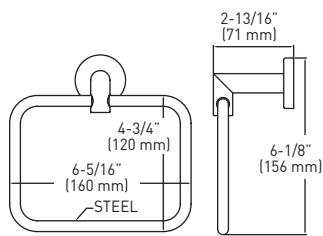
DOUBLE TOWEL BAR



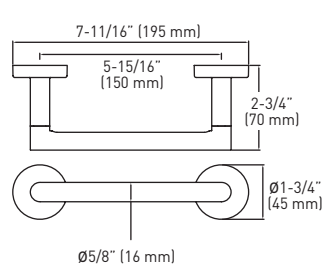
SINGLE ROBE HOOK



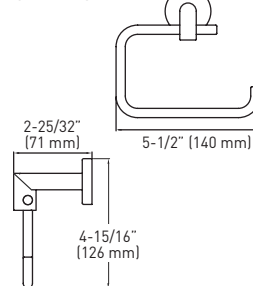
TOWEL RING



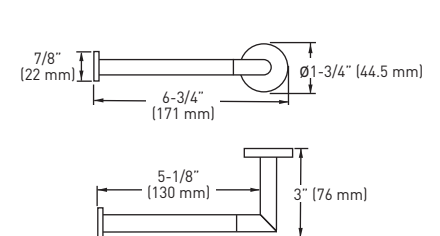
PIVOTING PAPER HOLDER



PAPER HOLDER/ TOWEL HOLDER



PAPER HOLDER (LEFT HAND INSTALLATION ONLY)



MEASUREMENTS SUBJECT TO A 3% VARIANCE

MEASUREMENTS ARE FOR REFERENCE ONLY. TAYMOR RESERVES THE RIGHT TO CHANGE THE PRODUCT SPECS WITHOUT NOTICE. FOR PRODUCT WARRANTY, PLEASE VISIT TAYMOR WEBSITE FOR DETAILS

RETAIL PACK	SATIN NICKEL 15	MATTE BLACK 19	POLISHED CHROME 26	MATERIAL	CASE PACK
10" TOWEL BAR	-	02-D2810BLK	-	ZINC/STEEL	4
18" TOWEL BAR	-	02-D2818BLK	02-D2818	ZINC/STEEL	4
24" TOWEL BAR	-	02-D2824BLK	02-D2824	ZINC/STEEL	4
30" TOWEL BAR	-	-	02-D2830	ZINC/STEEL	4
24" DOUBLE TOWEL BAR	-	-	02-D2824D	ZINC/STEEL	4
SINGLE ROBE HOOK	-	02-D2801BLK	02-D2801	ZINC	4
TOWEL RING	-	-	02-D2804A	ZINC/STEEL	4
PAPER HOLDER	-	02-D2848BLK	02-D2848	ZINC/STEEL	4
PAPER/TOWEL HOLDER	-	-	02-D2838	ZINC/STEEL	4
BUILDER PACK					
10" TOWEL BAR	04-SN2810	04-2810BLK	04-2810	ZINC/STEEL	10
18" TOWEL BAR	04-SN2818	04-2818BLK	04-2818	ZINC/STEEL	10
24" TOWEL BAR	04-SN2824	04-2824BLK	04-2824	ZINC/STEEL	10
SINGLE ROBE HOOK	04-SN2801	04-2801BLK	04-2801	ZINC	10
PIVOTING PAPER HOLDER	-	04-2808PBLK	04-2808P	ZINC	10
PAPER HOLDER	04-SN2848	04-2848BLK	04-2848	ZINC/STEEL	10
PAPER/TOWEL HOLDER	-	04-2838BLK	-	ZINC/STEEL	10
TOWEL RING	04-SN2804A	-	04-2804A	ZINC/STEEL	10

