

FOR USE ON DOORS 1-3/8"-2" (35 mm - 51 mm) THICK

**TOOLS REQUIRED FOR NEW INSTALLATION**

- Phillips screwdriver
- 1" (25.4 mm) drill bit
- Chisel
- 2-1/8" (54 mm) hole saw
- 1-5/16" (8 mm) drill bit

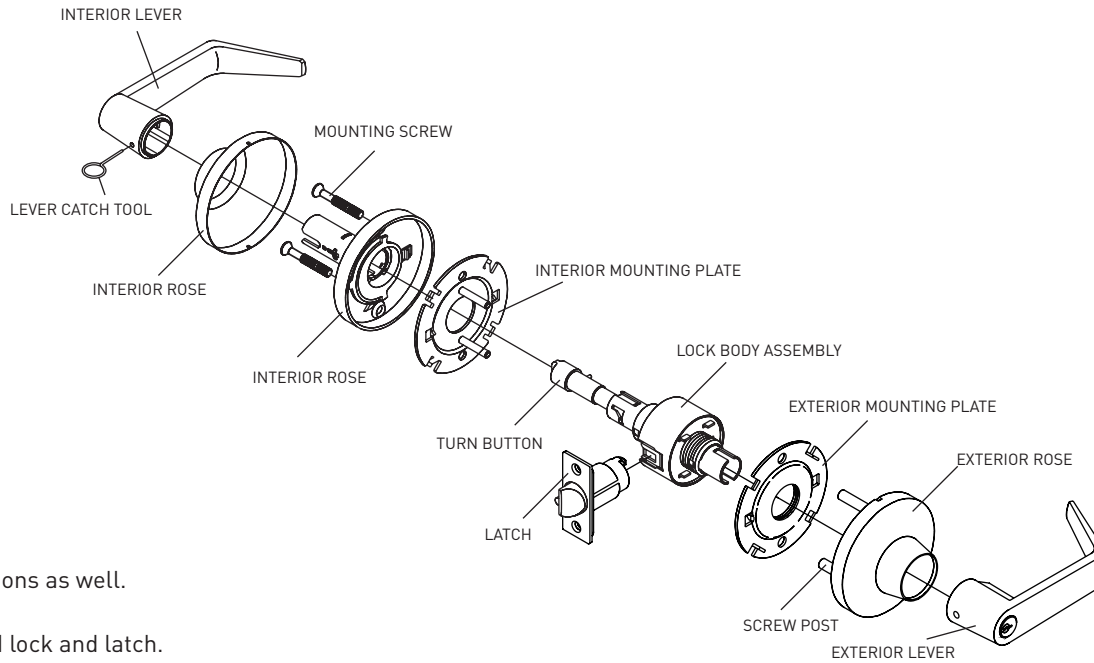
**TOOLS REQUIRED FOR REPLACEMENT**

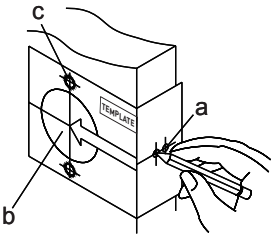
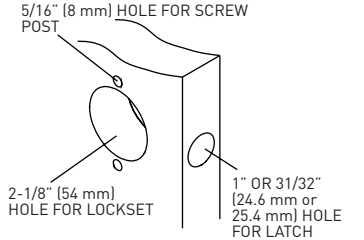
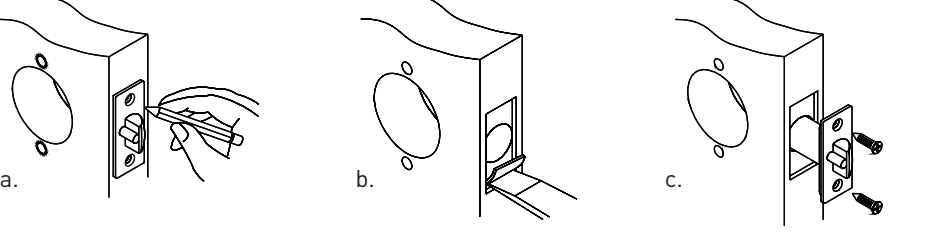
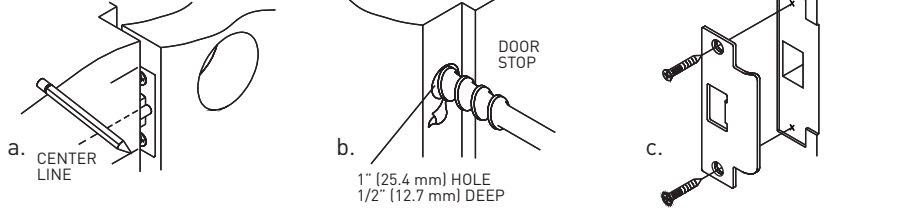
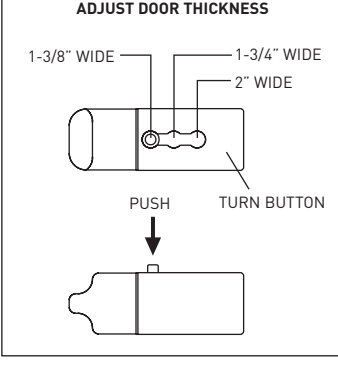
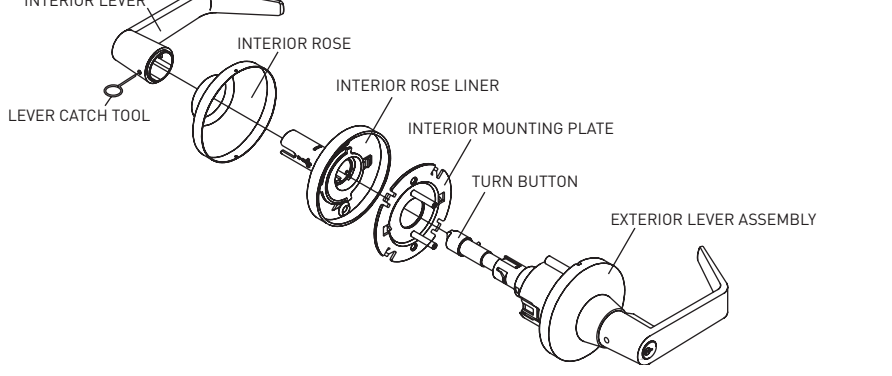
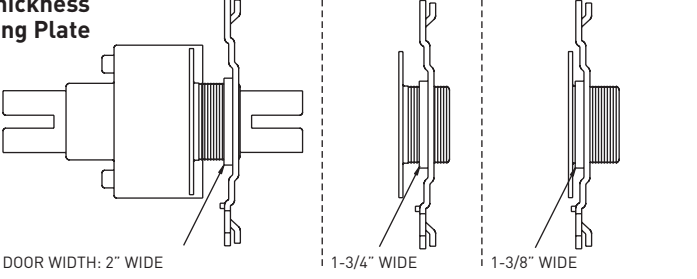
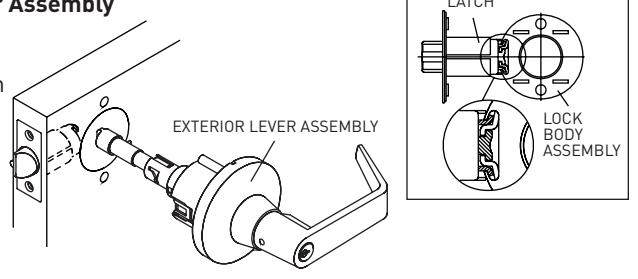
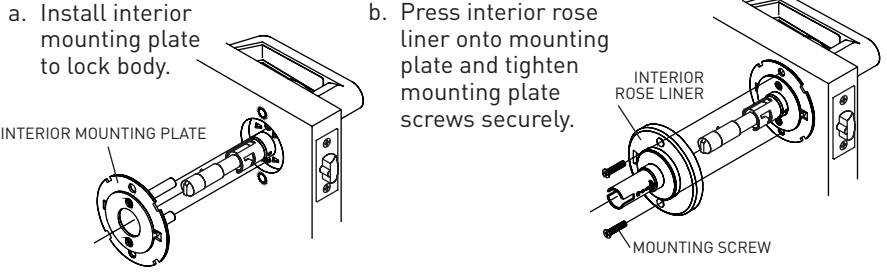
- Phillips screwdriver

Illustrations are shown with entry model. Installation is the same other functions as well.

Follow all steps for new installation.

Follow steps 3C, 4C, 5, 6, 7, 8 for replacement installation after removal of old lock and latch.



<p><b>1 Mark Door</b></p> <p>a. Start 3/8" from floor and mark center of door edge. (see "Door Widths" on door edge template at bottom.)</p> <p>b. Select backset 2-3/8" or 2-3/4" and mark hole center on door face.</p> <p>NOTE: BACKSET ON DOOR FACE MUST BE SAME AS BACKSET OF YOUR LOCK.</p> <p>c. Mark two holes for screw post.</p> 	<p><b>2 Drill Holes</b></p> <p>Drill holes as marked.</p> <p>NOTE: DRILL 2-1/8" (54 mm) HOLE FROM BOTH SIDES TO AVOID SPLITTING WOOD</p> 
<p><b>3 Install Latch</b></p> <p>a. Insert latch in hole and keep it parallel to door face. Mark outline and remove latch.</p> <p>b. Chisel 11/64" (4 - 4.3 mm) deep or until faceplate is flush with door edge.</p> <p>c. Insert latch and tighten screws.</p> <p>NOTE: LATCHBOLT BEVEL MUST FACE TO CLOSING DIRECTION.</p> 	<p><b>4 Install Strike</b></p> <p>a. Close door to mark horizontal line of strike.</p> <p>b. Measure one half of door thickness from door stop to mark vertical center line of strike. Drill 1" (25.4 mm) hole, 1/2" (12.7 mm) deep at intersection of horizontal and vertical center lines.</p> <p>c. Cut out jamb 3/32" (2.4 mm) deep or until strike is flush with jamb. Tighten screws securely.</p> 
<p><b>5 Adjust to Door Width - Interior Lever</b></p> <p>a. Use lever catch tool to depress lever catch visible under hole of interior lever shank and slide off interior lever, rose liner and mounting plate.</p> <p>b. Adjust position of turn button according to correct door width.</p> 	
<p><b>6 Adjust to Door Thickness - Interior Mounting Plate</b></p> 	<p><b>7 Install Exterior Lever Assembly</b></p> <p>Install exterior lever assembly on the door. Make sure tail of latch is engaging with retractor correctly as illustrated.</p> 
<p><b>8 Install Interior Mounting Plate and Rose Liner</b></p> <p>a. Install interior mounting plate to lock body.</p> <p>b. Press interior rose liner onto mounting plate and tighten mounting plate screws securely.</p> 	<p><b>9 Install Rose and Lever</b></p> <p>a. Be sure to fit rose in recess of rose liner.</p> <p>b. Depress lever catch with tool provided. Push interior lever in completely until catch engages in lever. Confirm lever is secured.</p> 